

Options for Every Lifestyle
Annual Events
Where We Live

Smithfield.
Good food. Responsibly.®

GREAT PLACES:

Kansas City, MO





“We’re new to Kansas City and have really embraced all that the city has to offer. There are so many interesting neighborhoods and attractions, and the schools in Platte County are great for our kids.”

– Karrie Badami

Benefits Customer Service Manager

A Thriving Metropolis with Something for Everyone

Food & Drink

“Kansas City” conjures up images of the region’s legendary strip steak and its distinctive barbecue recipes. In fact, the metropolitan area is home to more than 100 barbecue restaurants and dozens of craft breweries. Historic City Market features restaurants, concerts, festivals, and other special events.

Live music venues are found throughout the city, with many in the Westport entertainment district. With its Spanish-style architecture and upscale restaurants, the Country Club Plaza district is another popular destination.



Arts & Culture

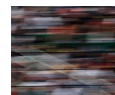
The Crossroads Arts District is home to the Kauffman Center for the Performing Arts, where audiences enjoy symphony, opera, and ballet. The prestigious Kansas City Repertory Theatre recently entered its sixth decade, while the outdoor Starlight Theatre hosts Broadway touring productions and concerts.

Art lovers have plenty of options, including the Nelson-Atkins Museum of Art and Kemper Museum of Contemporary Art. Each May, the Kansas City Jazz and Heritage Festival presents leading musicians at multiple venues around town.

Sports & Recreation

Whatever your taste in spectator sports—from NASCAR to the NFL—KC has plenty to offer. Football lovers can watch the Chiefs do battle at Arrowhead Stadium, while baseball fans root on the Royals. The city is also home to the Negro Leagues Baseball Museum, located in the historic 18th & Vine district.

Shawnee Mission Park offers a wealth of hiking trails for outdoors enthusiasts. Its 120-acre lake is also a popular spot for boating, fishing, and sail boarding. KC is also loaded with opportunities for cycling enthusiasts. For mountain bikers, Landahl Park provides the perfect playground for riders of all skill levels.



Family Life

The City of Fountains offers boundless opportunities for family-friendly fun, entertainment, and education. The Kansas City Zoo is home to more than 1,700 diverse creatures from around the globe, while the Sea Life Aquarium offers a literal window into an amazing underwater world.

Kaleidoscope, a free hands-on art center, is a popular spot for young children, while the magic of puppetry takes center stage at the Stone Lion Puppet Theatre. Union Station, the city's historic transit hub, is now home to the family-friendly Science City interactive science center and its Arvin Gottlieb Planetarium.



Annual Events

Whatever your age or interest, Kansas City offers a wide range of festivals and other events for every season.

Fall

Kansas City Renaissance Festival

Plaza Art Fair

Halloween Haunt

American Royal Livestock Horse Show and Rodeo

Weston Applefest

Boo at the Zoo

WaterFire Kansas City

18th and Vine Jazz and Blues Festival



Winter

Kansas City Restaurant Week



Snake Saturday Parade and Family Fun Festival

Kansas City St. Patrick's Day Parade

Crown Center Ice Terrace

Christmas in the Park at Longview Lake

Plaza Lights



Mayor's Christmas Tree

Downtown Dazzle

Spring

Fountain Day



Brookside Art Annual

NASCAR at Kansas
Speedway

Old Shawnee Days

KC PrideFest



Fest Italiana

Jazzoo

Boulevardia



Summer

KC RiverFest

Amelia Earhart Festival

Ethnic Enrichment
Festival



Bacon Fest

Dine Downtown

Rhythm 'N Balloons



Kansas City Irish Fest

Santa-Cali-Gon Days

Dancefestopia

Art Westport

Paris of the Plains
Cocktail Festival

Where We Live

Whether you prefer the hum of the city, the comforts of the suburbs, or the tranquility of the country, the Kansas City metropolitan area has something for everyone. Learn more about some of the locations our people call home and what each has to offer.

Kansas City – Downtown



Kansas City is home to a diverse collection of neighborhoods that appeal to singles and families alike—from the lofts and clubs of downtown to the tree-lined neighborhoods of Westport. Other popular areas include the Country Club Plaza and the Zona Rosa mixed-use development.

Kearney

Kearney is popular among employees who prefer the vibe of a smaller community. A 30-minute drive from Smithfield's KC offices, the city offers plenty of outdoor recreational



opportunities. Residents enjoy concerts throughout the summer months at the Kearney Amphitheater.

Liberty

With its highly regarded public schools, the city of Liberty is a popular option for young families. A 20-minute drive from Smithfield's KC offices, Liberty is known for its



picturesque town square, Arthur-Leonard Historic District, and annual Liberty Fall Festival.

North Kansas City

Located 15 minutes from Smithfield's KC offices, North Kansas City has highly rated public schools that make it a mecca for young families. The city offers convenient shopping, plenty of



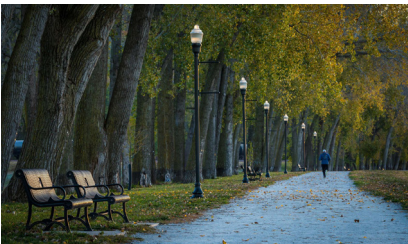
outdoor recreational opportunities, and close proximity to the attractions of Kansas City itself.

Overland Park



Just 30 minutes south of Smithfield's KC offices, Overland Park is the second-most populous city in Kansas. Known for its strong school district and upscale homes, local attractions include the Arboretum & Botanical Gardens and the Museum at Prairie Fire.

Parkville



Only 15 minutes south of Smithfield's KC offices, Parkville is known for its quiet neighborhoods, antique shops, art galleries, and historic downtown

area. Outdoors enthusiasts enjoy the Parkville Nature Sanctuary's wildlife preserve and the English Landing Park on the Missouri River.

Platte City



Platte City, just a 10-minute drive north on I-29 from Smithfield's corporate offices, offers families spacious subdivisions, great schools, and the many pleasures of country living. Residents enjoy a variety of annual events including the Platte County Fair.

Smithville



Just 15 minutes northeast of Smithfield's KC offices, Smithville combines an easy commute with the pleasures of a small town. The Downtown Smithville Historic District is on the National Register of Historic Places, and the 7,200-acre Smithville Lake offers numerous recreational opportunities.

Additional Resources

Tourism

Visit KC
visitkc.com

Local Governments

City of Kansas City
kcmo.gov

North Kansas City
nkc.org

City of Kearney
ci.kearney.mo.us

City of Parkville
parkvillemo.gov

City of Liberty
libertymissouri.gov

Platte County
co.platte.mo.us

Public Schools

Blue Valley Schools
district.bluevalleyk12.org

Kansas City Public Schools
kcpublicschools.org

The Kearney School District
ksdr1.net

Liberty Public Schools
liberty.k12.mo.us

North Kansas City Schools
nkcschools.org

Publications

Kansas City Star
kansascity.com

435–Kansas City’s Magazine
435mag.com

Dos Mundos
dosmundos.com

The Pitch
pitch.com

Selected images in this booklet were provided courtesy of Visit KC.



Country Club Plaza, Kansas City

Kansas City, MO



Whether you make one of Kansas City's distinctive downtown neighborhoods home or prefer the comforts of its nearby towns and suburbs, the "City of Fountains" has plenty to offer Smithfield employees. Jazz and barbecue, professional sports, the Missouri River's many attractions, and the Kauffman Center for the Performing Arts are just a part of KC's broad appeal.

Smithfield

Good food. Responsibly.

Smithfield Foods, Inc.
11500 North Ambassador Drive
Kansas City, MO 64153
+1 816 243 2700